

# Modinex

Viroc and Perforated Viroc



# Concrete Feature Wall Panel

A cement bonded particle board (CBPB) material, Viroc combines the flexibility of pine wood particles with the strength and durability of cement. With the look of real concrete panels, it's the smart way to ensure interior walls make a statement in contemporary homes, hotels, restaurants, foyers and commercial fit-outs.

Viroc, suitable for internal and external use, provides the natural authentic finish of concrete. Viroc panels, have a heterogeneous appearance with difference shades randomly dispersed, resulting from the natural colour of the raw materials used and the chemical reactions.





Concrete style  
and strength,  
the clever way

From raw industrial vibes to a sophisticated urban feel, concrete is on the rise in architecture and interiors design. The authentic concrete finish that is more cost effective and easier to install. Viroc is a next generation sustainable cladding material.



# Viroc

Authentic character of concrete

## Size



## Colours



## Features and benefits

Sheet size — 3000mm x 1250mm

Sustainability — Manufactured using 100% recycled PEFC and FSC certified plantation timber

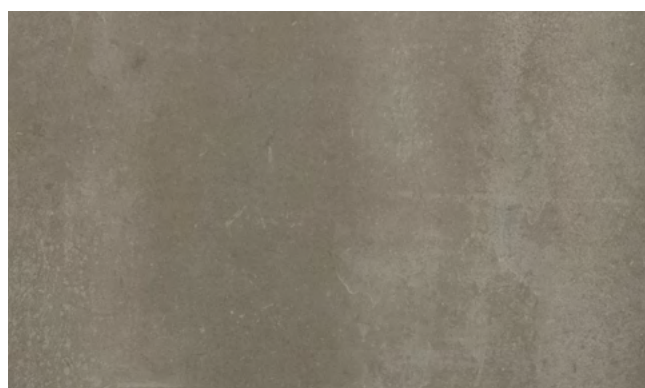
Application — Suitable for internal and external use

Thickness — Available in 12mm and 19mm thickness

Sealer — If used for flooring, benchtops, splashbacks, or externally, a sealer coat is to be applied to protect from staining

Fire rating — Group 1 internally and BAL29 externally

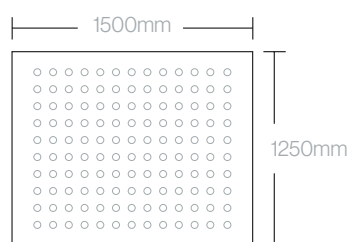
Design - Available in a polished or raw finish, and custom colours are available on request for indoor use



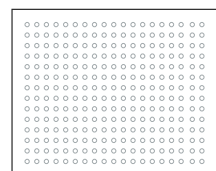
# Perforated Viroc

Acoustic elegance

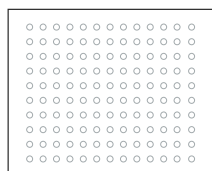
## Size



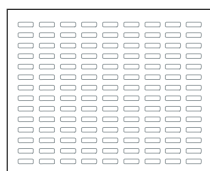
30mm DIA



50mm DIA



30mm x 81mm



\*Can be perforated according to your design preferences.

## Colours



## Features and benefits

Sheet size — 1500mm x 1250mm

Acoustic properties — 0.7NCR rating (may vary depending on perforation size and open space percentage)

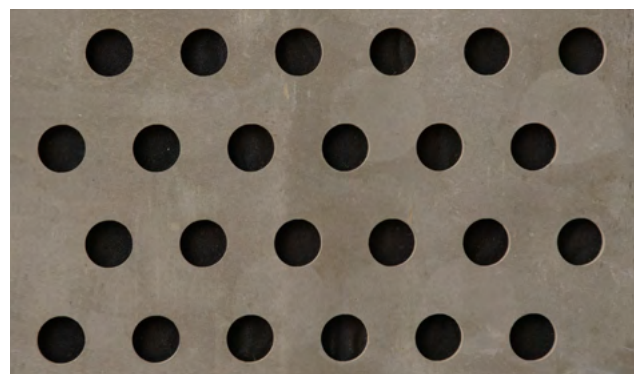
Sustainability — Manufactured using 100% recycled PEFC and FSC certified plantation timber

Application — Internal use only

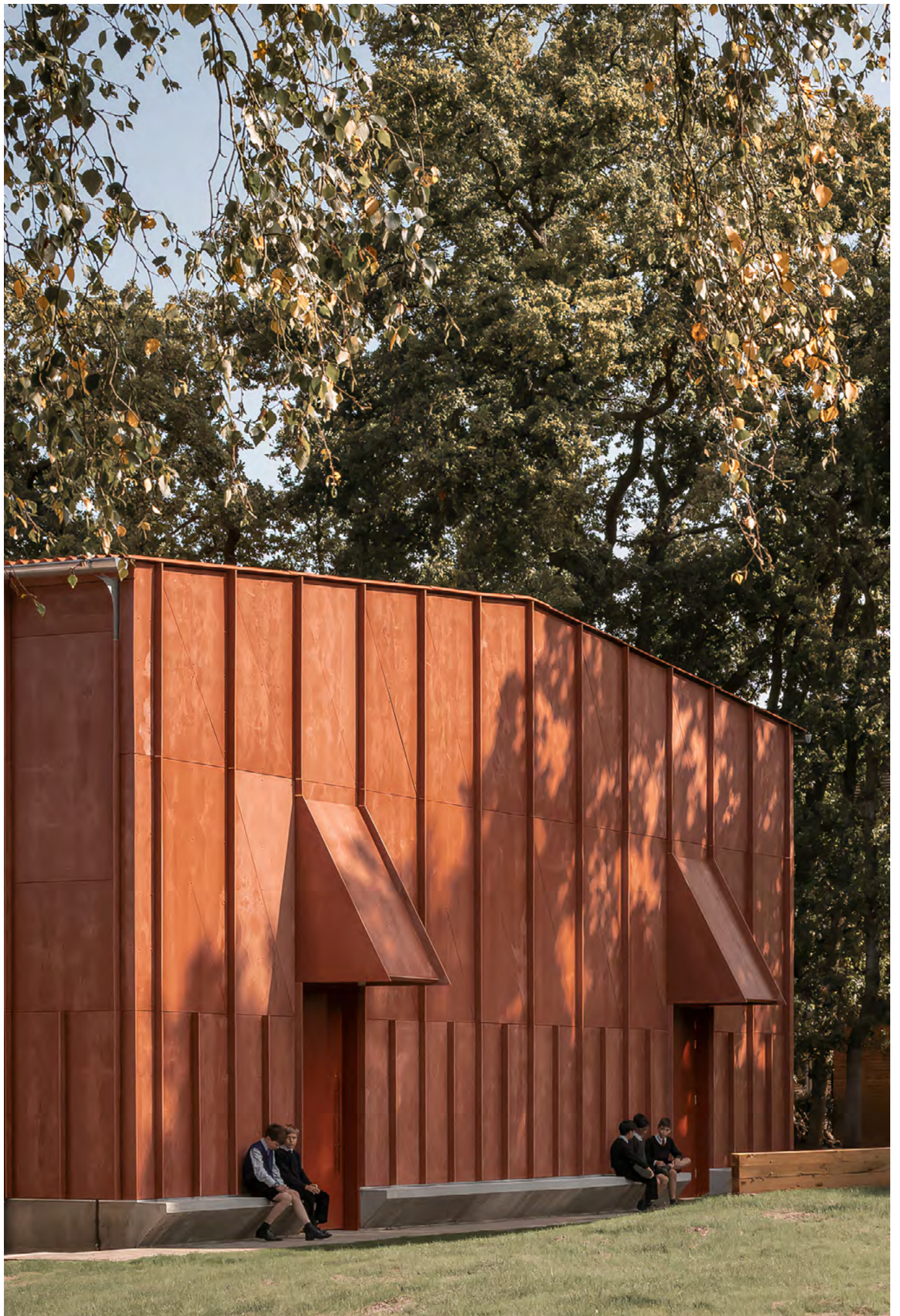
Thickness - Available in 12mm thickness

Fire rating — Group 1 internally and BAL29 externally

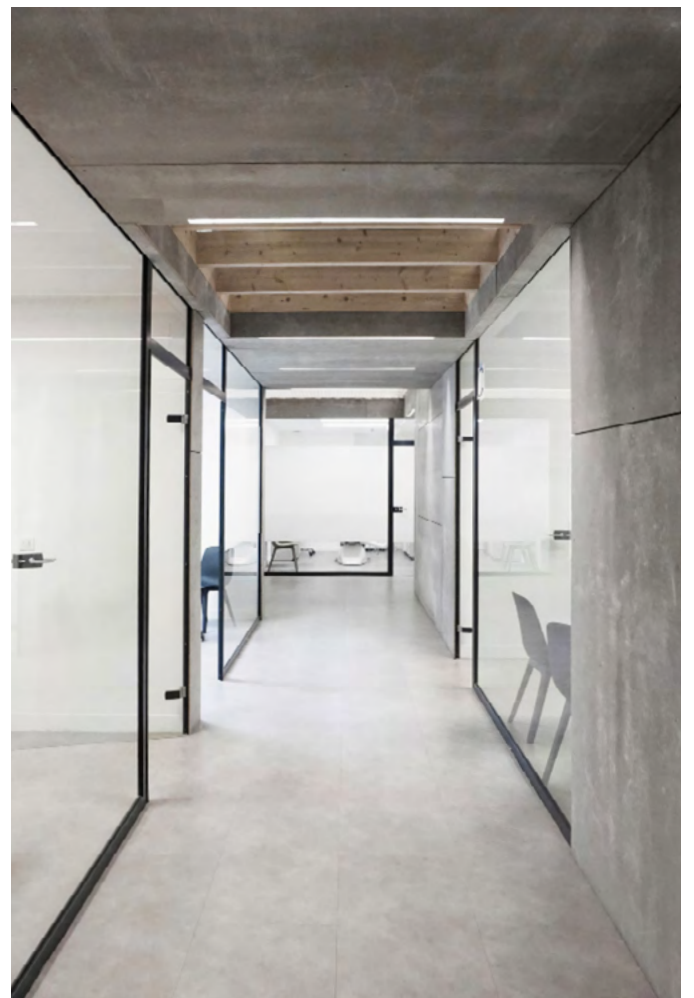
Design - Available in a polished or raw finish, and custom perforation patterns are available on request













## Sustainability

Delivering an authentic finish with a low embodied energy.



At Modinex, we pride ourselves on being environmentally responsible. Whilst achieving a natural authentic finish, Viroc is sustainably manufactured using Portland cement and 100% recycled PEFC and FSC certified plantation timber chips.

Viroc is a non-toxic and silica-free material, that also contains no formaldehyde. During the manufacturing process, waste and other bi-products are used to create thermal energy and cement.

An Environmental Product Declaration (EPD) is available for download at **[modinex.com.au](https://modinex.com.au)**

Let us help you specify your next project

P — 1800 156 455

E — [hello@modinex.com.au](mailto:hello@modinex.com.au)

Inspiration and product downloads  
available at **[modinex.com.au](http://modinex.com.au)**

