



Product Showcase

Altaché™ Clad



Sustainably sourced, Australian made innovations

Timber is a sustainable, renewable, carbon-positive resource that can reduce the carbon footprint of your project. Designing with timber enhances the sustainability of your space by capitalising on natural materials that can be re-purposed in the future.

At Modinex, we pride ourselves on being environmentally responsible. Our local base gives us the advantage of collaborating closely with architects and designers. By understanding your needs, we can create sustainable design solutions that are compliant, fit-for-purpose and brimming with natural beauty.

Our manufacturing plants utilise natural timber plantations that are PEFC certified, ensuring our design collections that are sourced from sustainably managed forests. We also use environmentally sustainable, ultra-low VOC coatings to protect our environment for the generations to come.



Streamlined, contemporary and sophisticated

Design and Performance

Turn heads with Altaché™ Clad from Modinex. This superbly stylish profile combines sleek lines of anodised aluminium with the natural warmth of Western Red Cedar. Make A modern Statement with Altaché™.

Versatility — Two-tone aesthetic transforms spaces with dynamic visual language

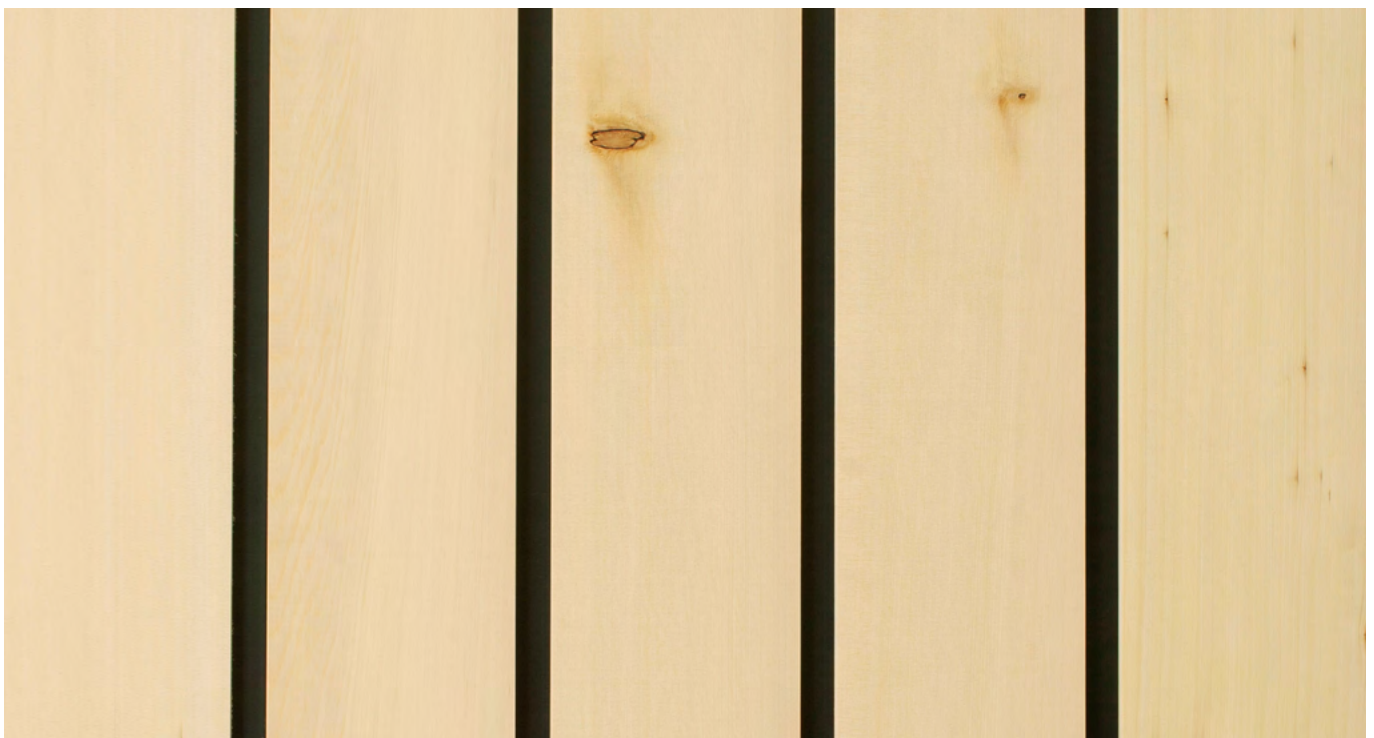
Fire rating — Varies by timber species. All Modinex timber species can achieve Group 3 for internal applications (Group 1 when treated with Fireshield). Modinex hardwood species are suitable for external applications up to BAL29. Softwood species do not meet the material requirements for BAL ratings

Easy to Install — Concealed fixings create uninterrupted lines through precision-engineered aluminium extrusion

Flexibility — Multiple profile and batten sizes for adaptive design

Performance — Superior thermal insulation ideal for a variety of climate conditions

Sustainable — Responsibly sourced PEFC certified timber combined with 100% recyclable aluminium profiles



How to specify

Download REVIT files, installation instructions, product care and technical information at modinex.com.au



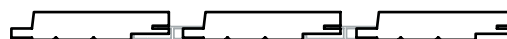
Choose your shape

| PROFILE CODE | DIMENSION |
|--------------|----------------|
| PR-AC-42X21 | 42mmW x 21mmD |
| PR-AC-42X40 | 42mmW x 40mmD |
| PR-AC-97X18 | 97mmW x 18mmD |
| PR-AC-147X18 | 147mmW x 18mmD |

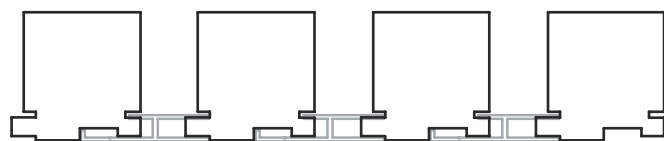
Profiles



42mm wide
21mm thickness available



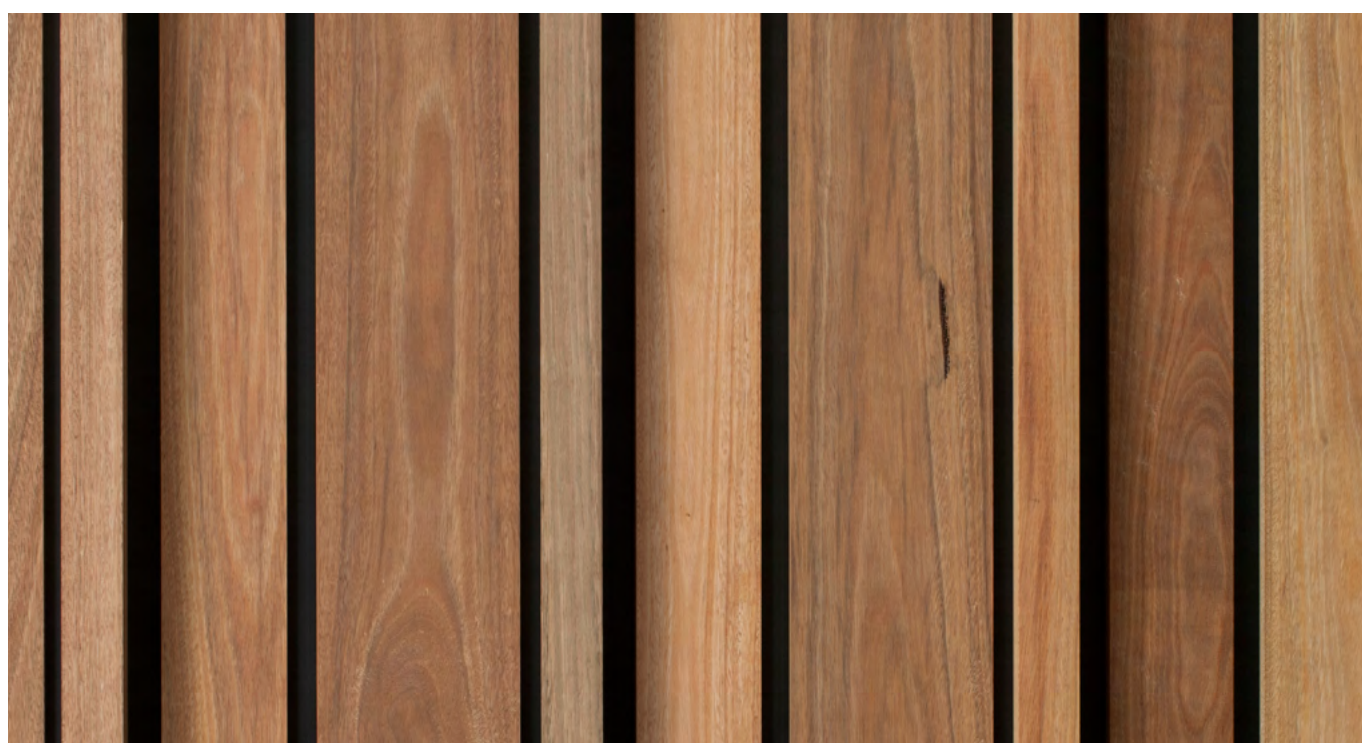
97mm wide
18mm thickness available



42mm wide
40mm thickness available



147mm wide
18mm thickness available



Timber Species

All our ranges of timber species are available in set length and random length. Please contact our projects team for more information.

— SOFTWOOD

Western Red Cedar, Alaskan Cedar & Hemlock are the only suitable species for 9mm thick profiles. All Softwood species can be used for 12mm thickness or greater. For external applications, please use 18mm thick profiles or greater.



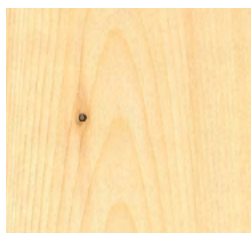
Western Red Cedar

Plantation
100% PEFC Certified
Greentag Certified



Hemlock

Plantation
100% PEFC Certified
Suitable for indoor and
out-of weather use only

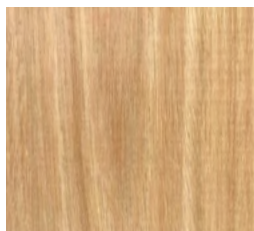


Alaskan Cedar

Plantation
100% PEFC Certified

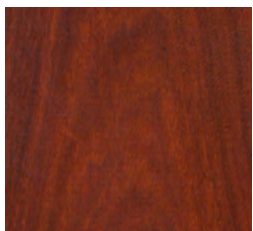
— HARDWOOD

Hardwood species can be used for 15mm thickness or greater for out of weather applications and 18mm thickness or greater for external use.



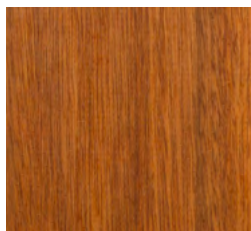
Blackbutt

FSC Certification is available



Ironbark

FSC Certification is available



Spotted Gum

FSC Certification is available



Create stunning wow factor
with flexibility of style, texture,
colour, shape and species.

Talk with our design team today about how to maximise the grandeur of your space. Our extensive product range puts a wealth of inspiration at your fingertips. We can even collaborate with you to innovate custom solutions, specifically designed to bring your vision to life and elevate your space with exclusive designer appeal.



Let us help you specify your next project

Contact P—1800 156 455 E—hello@modinex.com.au

Learn more

Inspiration and product downloads
available at [modinex.com.au](https://www.modinex.com.au)

